

Custom All Aluminum Gooseneck and 5th Wheel Trailers

BUILT FOR SPEED

High Quality Trailers Built by Racers for Racers

SEMI, GOOSENECK, FIFTH WHEEL AND PULL-A-LONG TRAILERS

GREG WILSON SPRINT TRAILER



Call for a Quote - 815.426.2761

www.tande-racetrailers.com





SAFETY
HELP KEEP
THIS PLANT
SAFE & CLEAR
DANGER
ALL
PROTECTION
REQUIRED



SAFE
FIRE
HELP
THIS
SAFE
DA
PHOTO
RE...



FRIEDRICH



GENERATOR

ENGINE CONTROL

QIP
DIGITAL DISPLAY
A B

WARNING
FLAMMABLE LIQUID
KEEP AWAY FROM HEAT
AND OPEN FLAMES





Labels on the control panel and electrical components.

CAUTION
Do not touch the engine or generator set when it is running. The engine and generator set are hot and can cause serious injury or death.

































TLE ENV
AutoHaulers

Custom Built Trailers by
T&E ENT.
Auto Haulers
MOSCOW, IL
318-438-2781











T & E ENT.
AutoHawkers









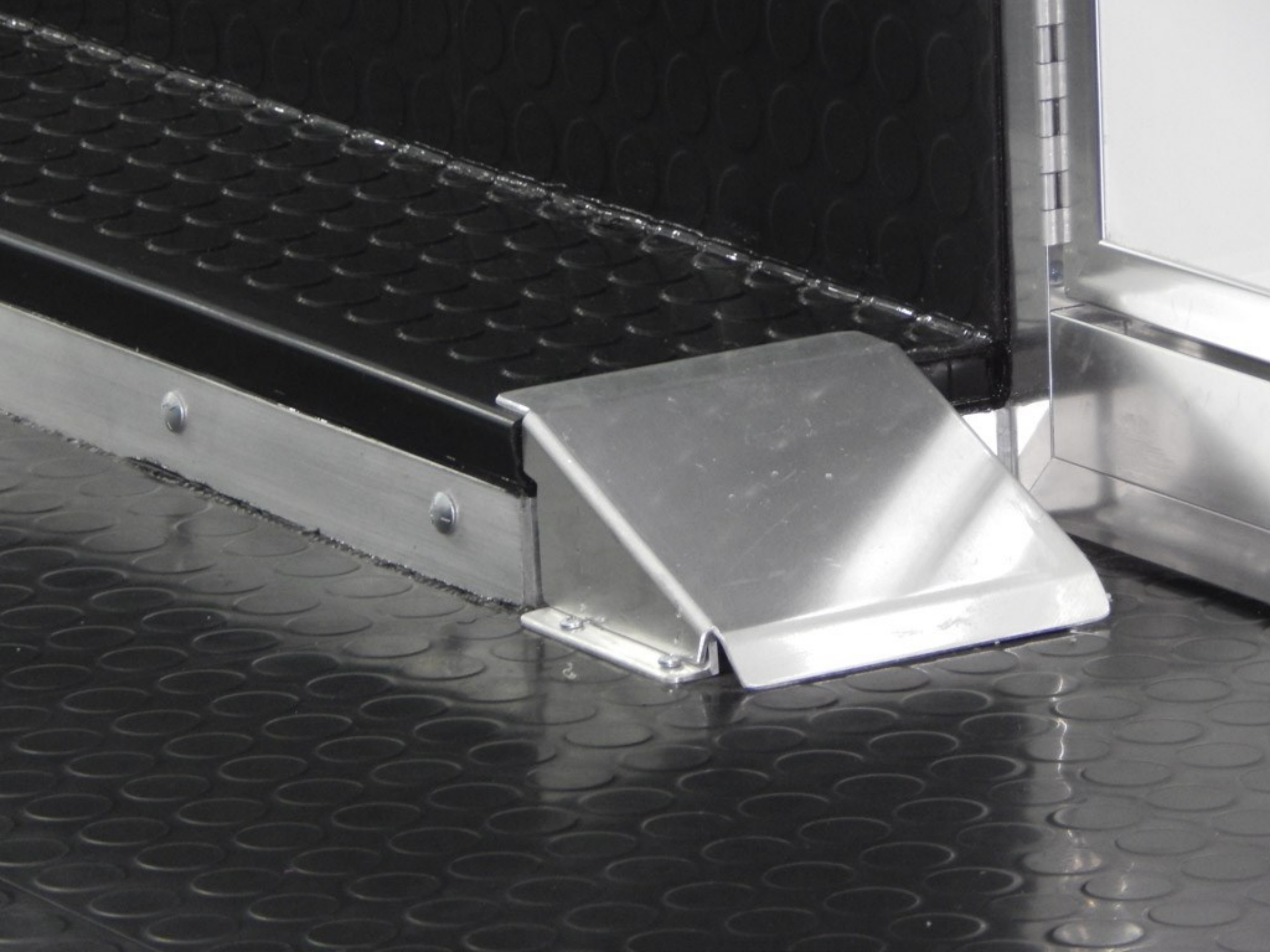


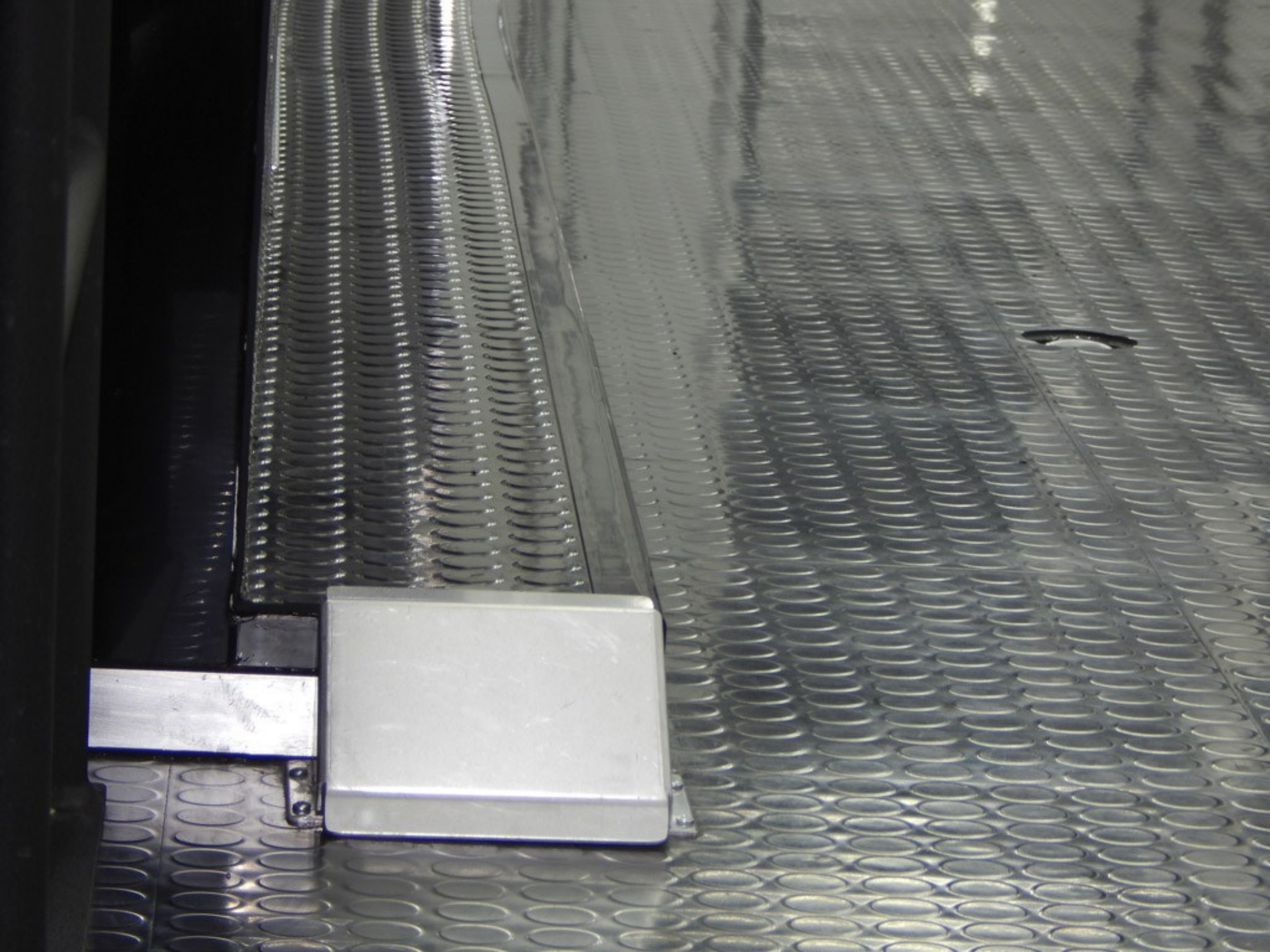


































SAFETY
Please read the following safety instructions carefully before using the equipment. Failure to follow these instructions may result in injury or damage to the equipment.





DANGER
This area contains hazardous materials. Please refer to the Material Safety Data Sheet (MSDS) for handling instructions. Do not touch or inhale. In case of an emergency, contact the safety department immediately.







Two long, recessed fluorescent light fixtures mounted on the ceiling, providing bright illumination.

Two more long, recessed fluorescent light fixtures mounted on the ceiling, further down the hallway.

A large white cabinet or panel with a silver handle, located above the black cabinet.

A large black cabinet with multiple drawers, featuring silver handles and a lock mechanism. A small "USA" logo is visible on the top right corner of the cabinet.

A doorway leading to a darker area, possibly a garage or workshop, with a glimpse of a red and white structure.

A dark, curved structure, possibly a piece of equipment or a railing, in the foreground on the left side.

A white cabinet or panel with a silver handle, located in the foreground on the right side.









































ADVISED
ADANGER

- Exhaust and emissions generated by diesel engines and other internal combustion engines may contain carbon monoxide gas and other harmful pollutants, which could result in death or illness. The following health code is given these items can cause a fire or explosion. Read and follow all instructions.
1. Do not ride in the vehicle seat.
 2. Do not stand in the engine storage area when the engine is present.
 3. Close doors and windows in areas of operation of equipment when the vehicle is present.
 4. Run fuel oil or propane or alcohol burners after starting off fuel at the site.
 5. Do not drink, transport or otherwise fuel inside the vehicle.
 6. Open the windows, doors, or an exhaust system provided for venting the transportation area when vehicles are present.
 7. Do not operate propane equipment until lights or electrical equipment when motor fuel vehicles are present.





WARNING
ADANGER

1. Do not ride on this equipment unless you are properly trained and authorized to do so. The operator must be at least 18 years of age and must have received proper training from a qualified instructor. The operator must wear a seat belt and must not drink alcohol or use drugs while operating the equipment. The operator must not operate the equipment while fatigued or impaired. The operator must not operate the equipment in a hazardous or unsafe manner. The operator must not operate the equipment in a restricted area unless authorized to do so. The operator must not operate the equipment in a restricted area unless authorized to do so.
2. Do not touch any moving parts of the equipment. The operator must not touch any moving parts of the equipment unless authorized to do so. The operator must not touch any moving parts of the equipment unless authorized to do so.
3. Do not touch any moving parts of the equipment. The operator must not touch any moving parts of the equipment unless authorized to do so. The operator must not touch any moving parts of the equipment unless authorized to do so.
4. Do not touch any moving parts of the equipment. The operator must not touch any moving parts of the equipment unless authorized to do so. The operator must not touch any moving parts of the equipment unless authorized to do so.
5. Do not touch any moving parts of the equipment. The operator must not touch any moving parts of the equipment unless authorized to do so. The operator must not touch any moving parts of the equipment unless authorized to do so.
6. Do not touch any moving parts of the equipment. The operator must not touch any moving parts of the equipment unless authorized to do so. The operator must not touch any moving parts of the equipment unless authorized to do so.
7. Do not touch any moving parts of the equipment. The operator must not touch any moving parts of the equipment unless authorized to do so. The operator must not touch any moving parts of the equipment unless authorized to do so.
8. Do not touch any moving parts of the equipment. The operator must not touch any moving parts of the equipment unless authorized to do so. The operator must not touch any moving parts of the equipment unless authorized to do so.



⚠ DANGER

Vehicles and equipment powered by internal combustion engines and placed in recirculation vehicles may cause carbon monoxide poisoning or asphyxiation, which could result in death or serious injury. The flammable liquids used to power these items can cause a fire or explosion, which can result in death or serious injury.

- To reduce risk:
1. Do not ride in the vehicle storage area when vehicles are present.
 2. Do not sleep in the vehicle storage area when vehicles are present.
 3. Close doors and windows in walls of separation (if installed) when any vehicle is present.
 4. Run fuel out of engines of stored vehicles after shutting off fuel at the tank.
 5. Do not store, transport, or dispense fuel inside this vehicle.
 6. Open the windows, openings, or air ventilation systems provided for venting the transportation area when vehicles are present.
 7. Do not operate propane appliances, pilot lights, or electrical equipment when motorized vehicles are present.





ADVISED
⚠ DANGER

Tools and equipment placed in storage compartments are not to be used for their intended purpose. The use of tools and equipment in storage compartments may cause damage to the equipment, which could result in death or serious injury.

The following signs must be posted above the workbench at the top of the equipment, which are visible at all times.

1. Do not use the workbench storage area when equipment are present.
2. Do not store in the storage area any tools or equipment that are not intended for use in the laboratory.
3. Check doors and windows to verify if equipment are closed when storage is present.
4. Do not use the storage area for anything other than the storage of tools and equipment.
5. Do not store, transport, or otherwise use tools or equipment in the storage area.
6. Check the workbench, equipment, or any equipment attached to the workbench for safety, for the transportation of the workbench and products.
7. Do not operate program equipment, gas lights, or equipment attachments when equipment are present.

- death or serious injury. To reduce risk:
1. Do not ride in the vehicle storage area when vehicles are present.
 2. Do not sleep in the vehicle storage area when vehicles are present.
 3. Close doors and windows in walls of separation (if installed) when any vehicle is present.
 4. Run fuel out of engines of stored vehicles after shutting off fuel at the tank.
 5. Do not store, transport, or dispense fuel inside this vehicle.
 6. Open the windows, openings, or air ventilation systems provided for venting the transportation area when vehicles are present.
 7. Do not operate propane appliances, pilot lights, or electrical equipment when motorized vehicles are present.













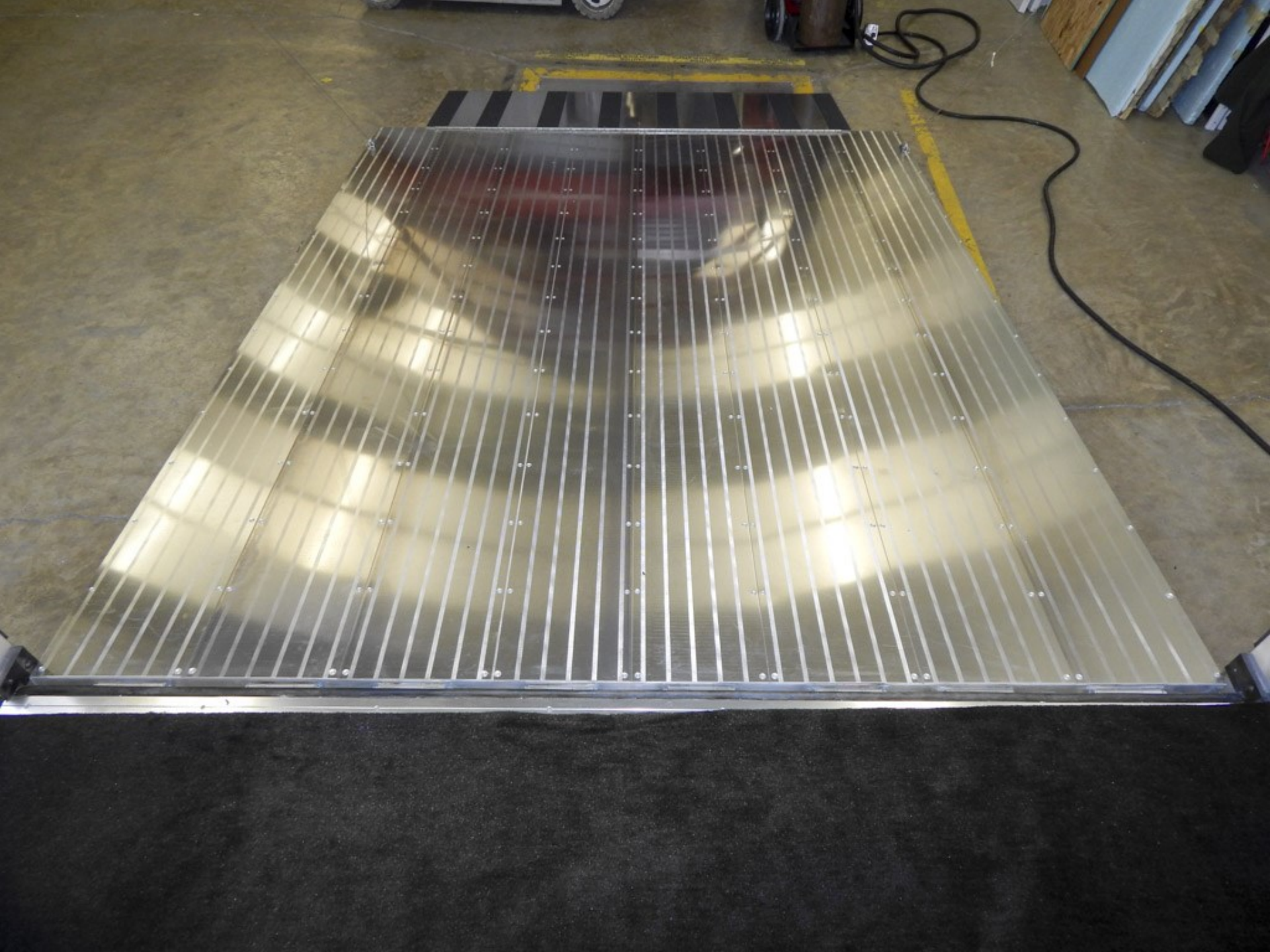




DANGER









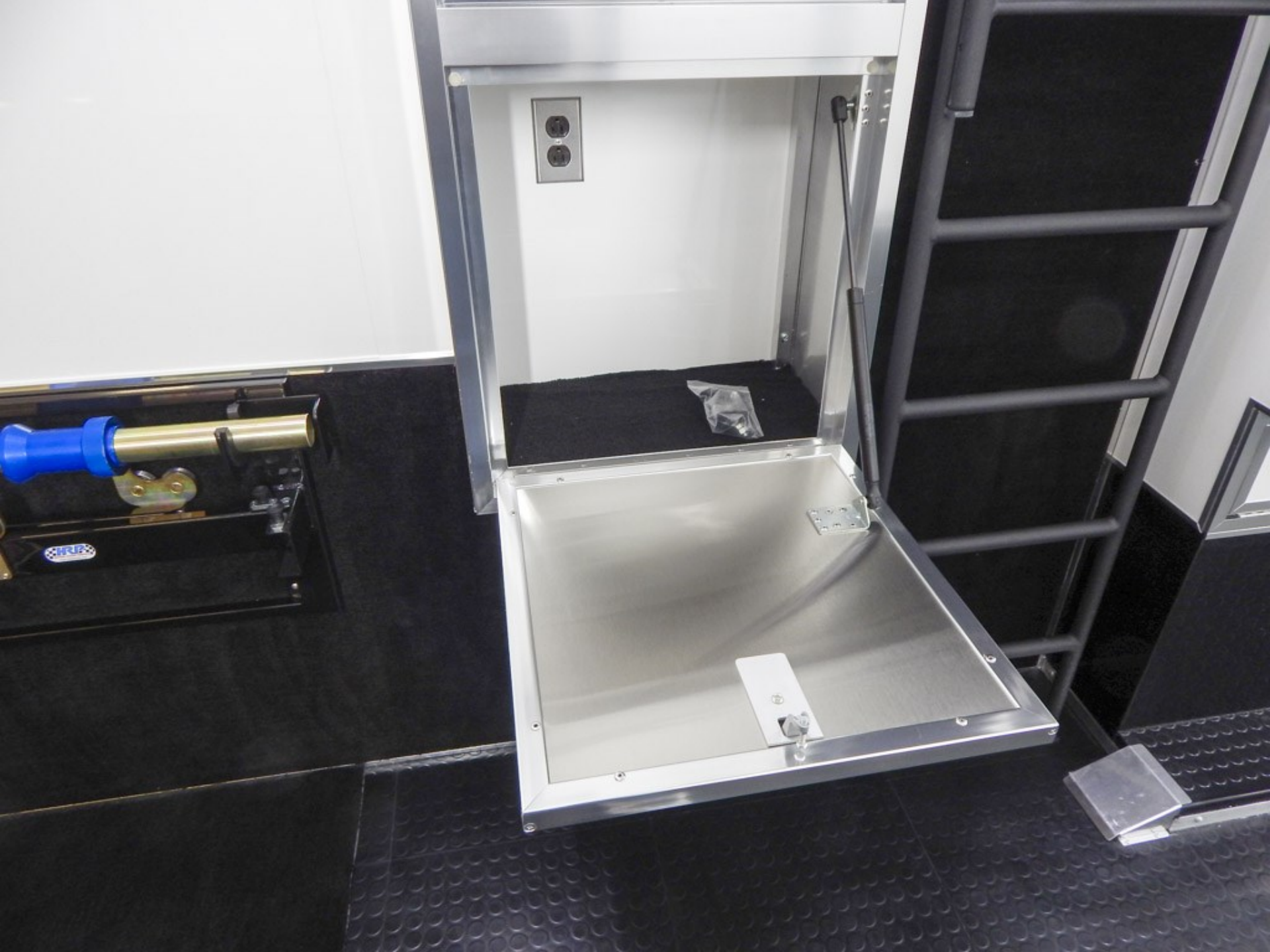




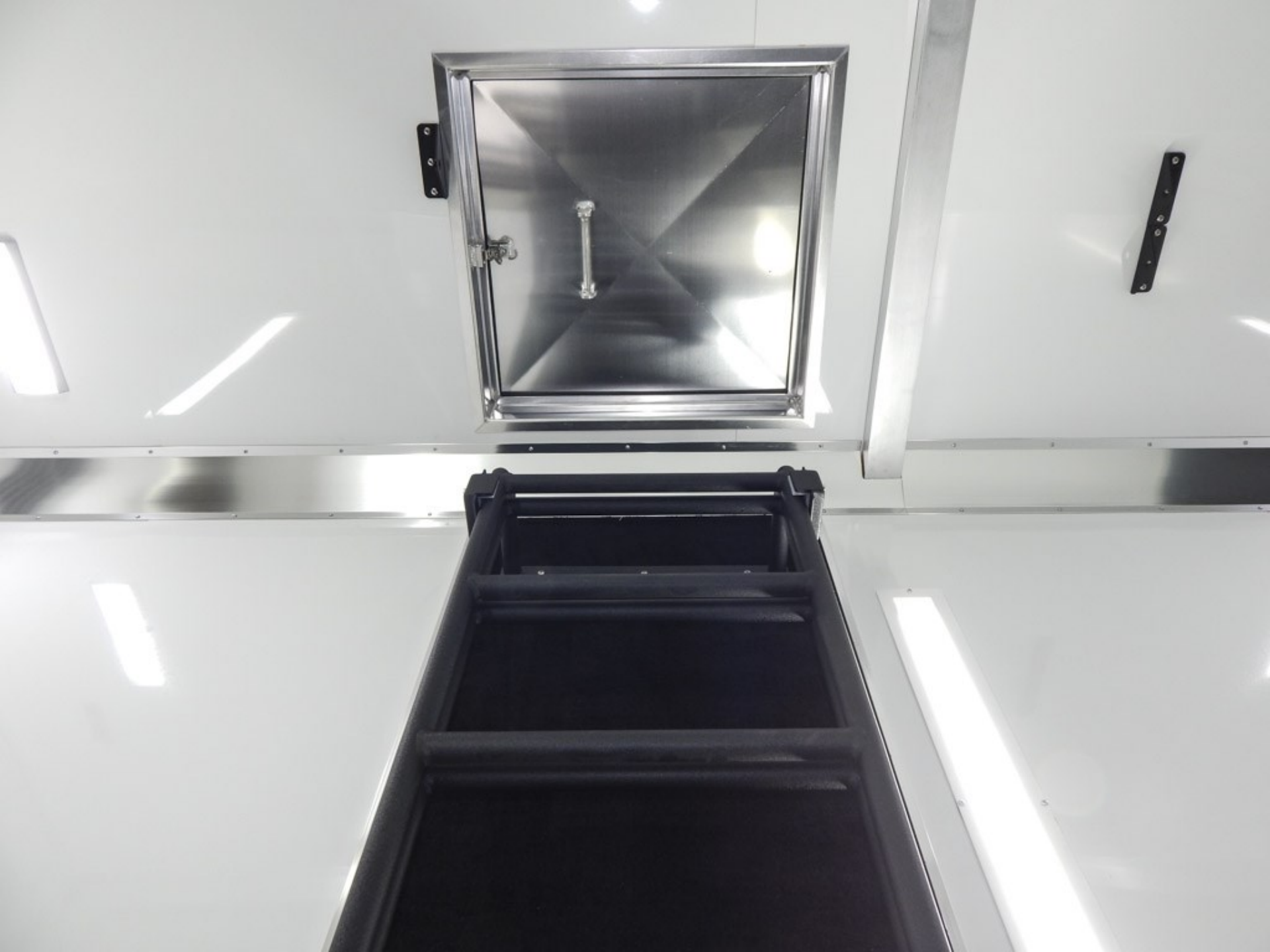






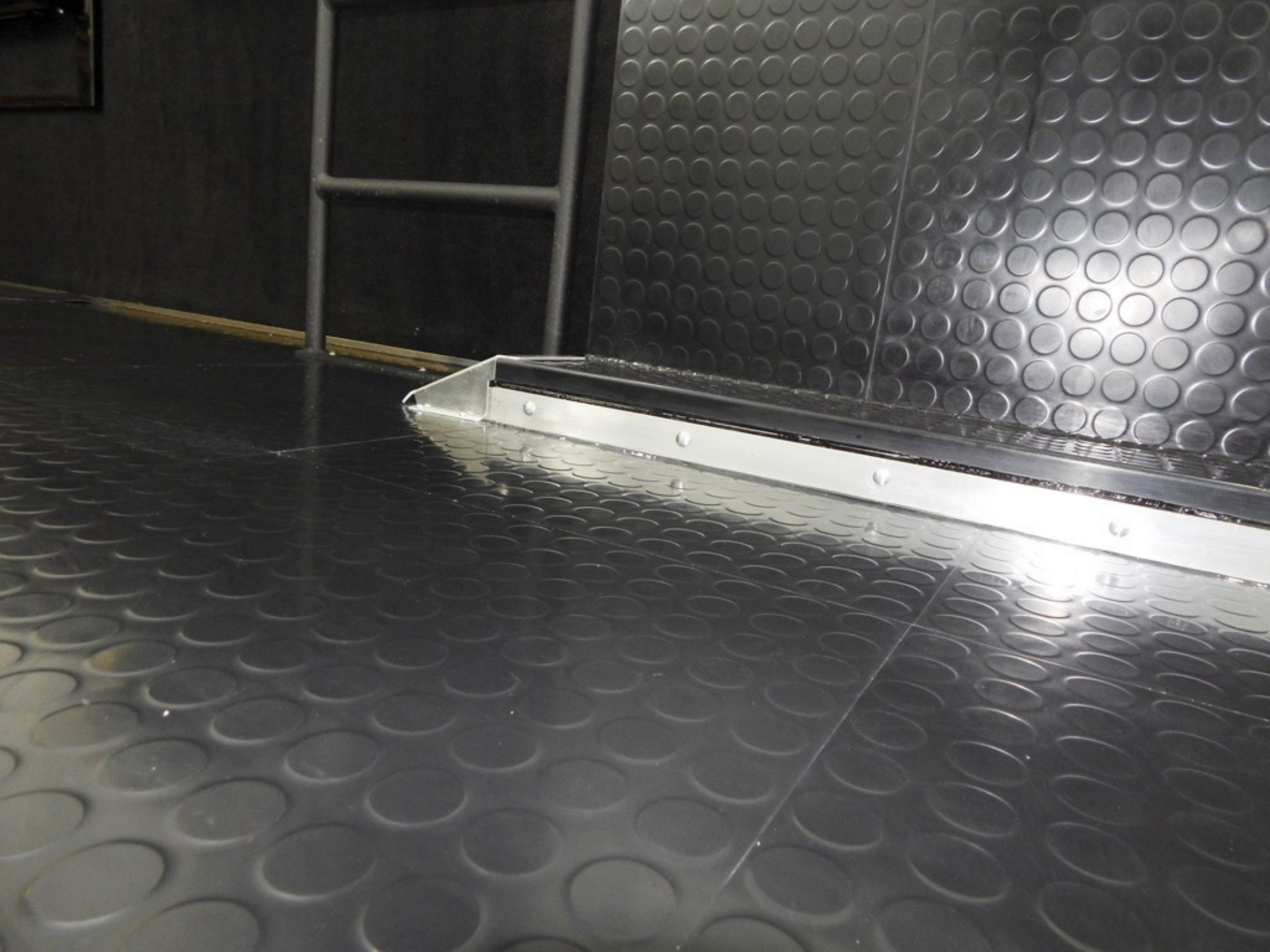




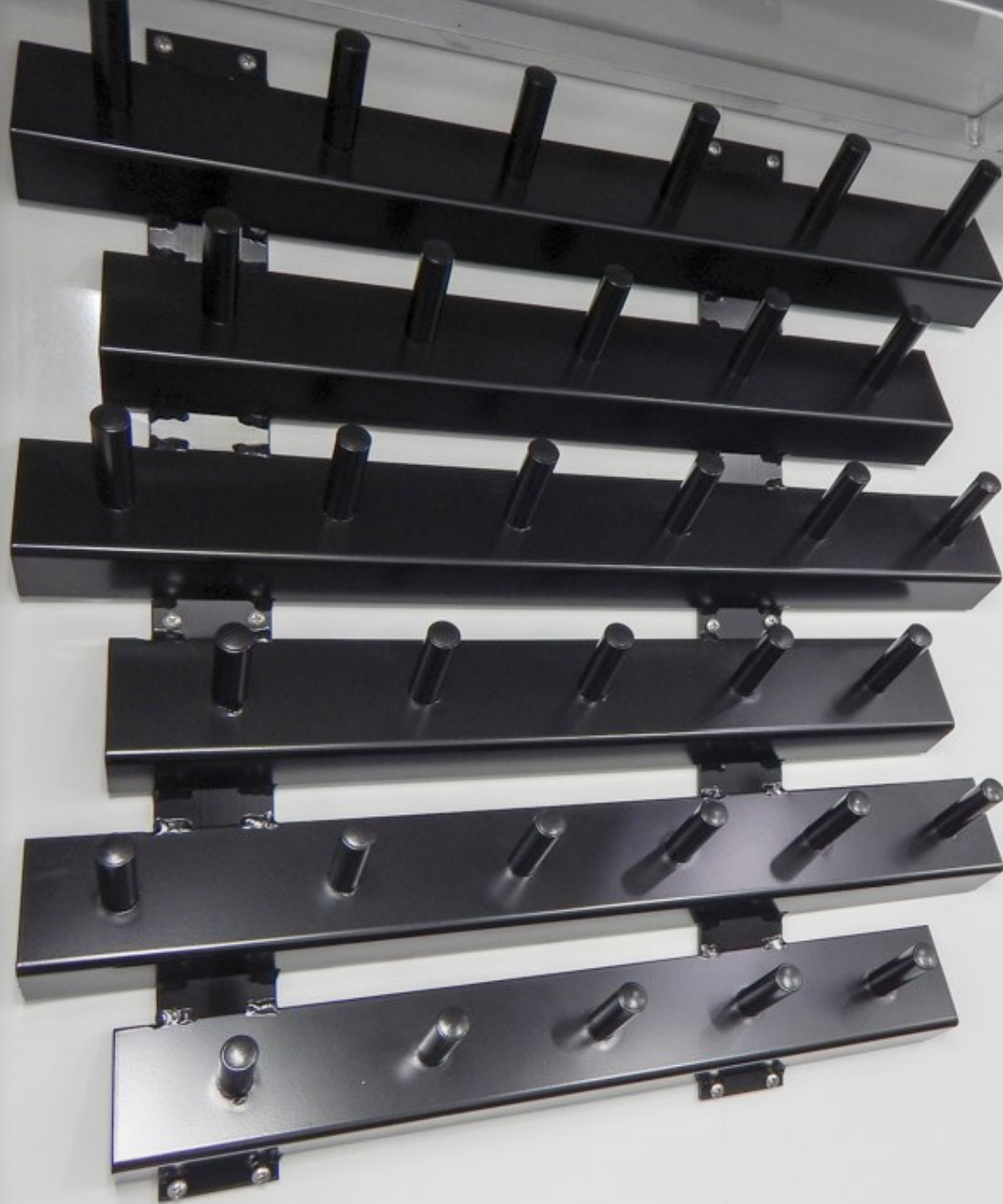






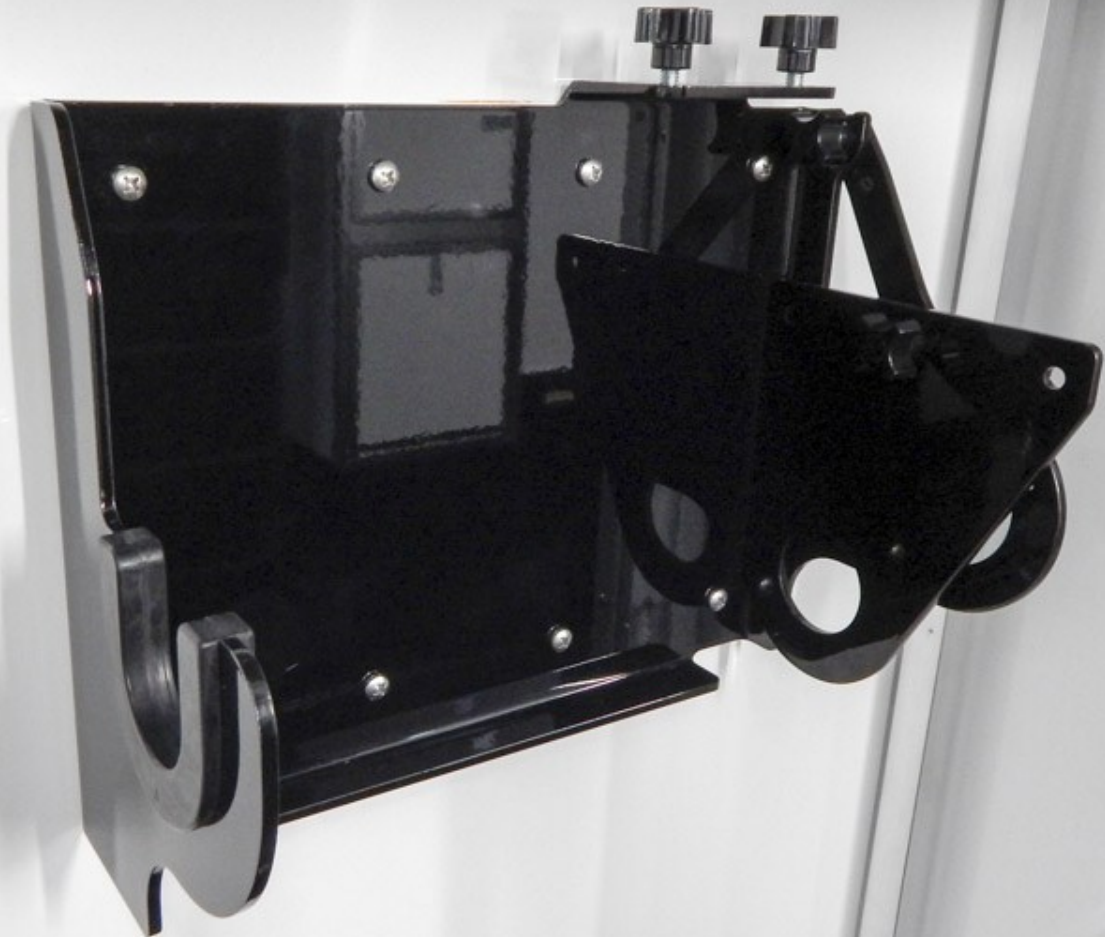




















LISTA



LISTA

MADE IN
USA



Bluetooth compatible SONY

Do not operate propane gas appliances if electrical equipment and/or wiring are present







































FRIGIDAIRE
MICROWAVE



SmartStar™ **Auto Cook**
SmartStar™ Auto Cook
allows you to cook your favorite
foods with just one touch of a button.
Simply press the SmartStar™ Auto Cook
button and the microwave will
cook your food perfectly every time.
SmartStar™ Auto Cook is available on
select models.

FRIGIDAIRE

8:8:80

MW DEF TIMER LOCK LB

AUTO
COOK

AUTO
REHEAT

DEFROST

1 2 3
easy set
4 5 6

7 8 9
POWER LEVEL 0 TIMER

POPCORN

BEVERAGE

START
+30 sec

BAKED
POTATO

FRESH
VEGGIES

SAFETY
LOCK

STOP

CLOCK








FRIEDRICH







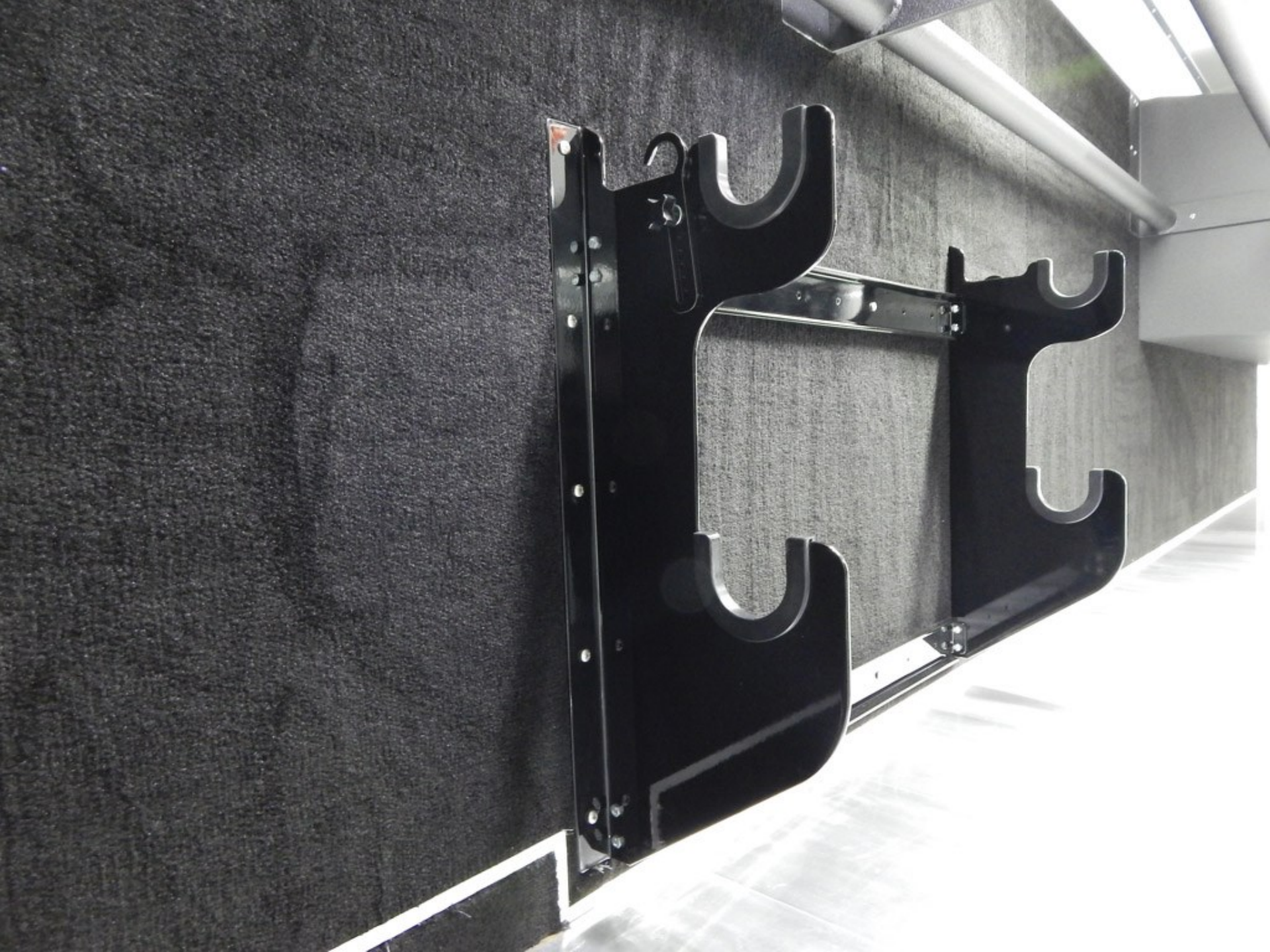




















WARNING
CAUTION: ALWAYS USE THE HOIST WITH THE PROPER LIFTING TECHNIQUE. DO NOT EXCEED THE MAXIMUM CAPACITY. ALWAYS USE THE PROPER LIFTING POINTS. ALWAYS USE THE PROPER LIFTING POINTS. ALWAYS USE THE PROPER LIFTING POINTS.





⚠ WARNING!
TO AVOID INJURY

1. Do not touch the robot arm or any other part of the robot system when the robot is in operation.
2. Do not touch the robot arm or any other part of the robot system when the robot is in operation.
3. Do not touch the robot arm or any other part of the robot system when the robot is in operation.
4. Do not touch the robot arm or any other part of the robot system when the robot is in operation.
5. Do not touch the robot arm or any other part of the robot system when the robot is in operation.
6. Do not touch the robot arm or any other part of the robot system when the robot is in operation.
7. Do not touch the robot arm or any other part of the robot system when the robot is in operation.
8. Do not touch the robot arm or any other part of the robot system when the robot is in operation.
9. Do not touch the robot arm or any other part of the robot system when the robot is in operation.
10. Do not touch the robot arm or any other part of the robot system when the robot is in operation.



⚠ DANGER

The spring assembly has been designed to counterbalance the weight transferred when opening and closing the cargo door. The entire bottom spring assembly, mounting hardware and cables are loaded with compressive energy. REPAIRS OR ADJUSTMENTS BY UNLICENSED PERSONS OR WITHOUT PROPER TOOLS IS HAZARDOUS AND COULD CAUSE INJURY. Do not attempt to remove or repair any door components, hardware or the structure to which these components are attached. Periodic inspection of the entire assembly, to include but not limited to, cable wear, hardware integrity and proper lubrication is required. ALL REPAIRS OR ADJUSTMENTS MUST BE PERFORMED BY EXPERIENCED DOOR SERVICE PERSONNEL ONLY.





































FOR DRAIN WASTE AND VENT ONLY

⚠ DANGER
Hazardous materials may be present in the engine compartment. Always use proper safety procedures when working with these materials. For more information, please refer to the engine manual. See your distributor for more information on safety procedures.

HOPE

WATER ALARM

DANGER
UP
DOWN



FOR DRAIN WASTE AND VENT ONLY

WARNING: This equipment is not to be used for drinking water. It is designed for use with fresh water only. Do not use with salt water or other corrosive liquids. Failure to follow these instructions may result in equipment failure and personal injury. IMPORTA

CELLULAR CONE PVC DWV PIPE PS 5004 40 ASTM 1901-02 1/2" 10' 10000000

SOLENOID VALVE

GOROT

Handwritten markings on a white plastic reservoir, including the number '1000' and the letter 'S'.



ALL
Dump

RISE

WATER DISCONNECT

SUSPENSION
UP
DOWN



TOP DR

ALL

PATSO

MASTER DISCONNECT

UP
DOWN





Upper
Lower Lights
Battery
Monitor
Starboard
Lower Light

AC Smith
Signature
INNOVATION FOR A BETTER BOAT



AC Smith.
Signature
INNOVATION HAS A NAME.

⚠ WARNING
Explosion Hazard
If the temperature and pressure relief valve is dripping or leaking, have a qualified person replace it.
Examples of a qualified person include: licensed plumbers, authorized gas company personnel, and authorized service personnel.
Do not plug valve.
Do not remove valve.











Custom Built Trailers by...

T & E ENT.
Auto Haulers
HESTER, IL
815-420-8781



Business, L.P.
T & E ENT.
Auto Haulers
813-484-4701



