

Custom All Aluminum Pull-a-Long Trailers

BUILT FOR SPEED

High Quality Trailers Built by Racers for Racers

SEMI, GOOSENECK, FIFTH WHEEL AND PULL-A-LONG TRAILERS

TORRENCE RACING TRAILER



Call for a Quote - 815.426.2761

www.tande-racetrailers.com















CAUTION
DO NOT EXCEED
MANUFACTURER'S
RATED WEIGHT
LIMITS OR LOADS
RECOMMENDATIONS.

CAUTION
SECURE HOOD OR
DOOR LATCH BEFORE
MOVING TRAILER.

CAUTION
DO NOT OPERATE
WITH HOOD OPEN.

WARNING
Do not walk on roof
or back of machine.

WARNING
DO NOT REVERSE
DIRECTION OF
ROTATION.

WARNING
DO NOT REVERSE
DIRECTION OF
ROTATION.

DIESEL
FUEL ONLY









CAUTION - WATCH YOUR STEP







MODEL 38
FOR WATER HEATERS APPROX. 4000 BTU
REPLACEMENT COND. CAP. 5UF 350VAC
XtPower
CLEVELAND, OHIO 44115

WARNING
DO NOT TOUCH
ELECTRICAL PARTS
WHILE THE UNIT IS ON





FRESH WATER CONNECTION

POWER TECH

COMMERCIAL



POWER TECH







GENERATOR

SHORE POWER

PORTER + CABLI

FRESH WATER

FRESH WATER CONNECT









GENERATOR

SHORE POWER

4 DANGER GREEN
CAUTION
FIRE HAZARD
DO NOT TOUCH
WHEN GENERATOR IS RUNNING

WATER + CABLE

SHORE POWER

 **DANGER**
OF
ELECTRICAL
INJURY
INTRODUZIONE
NORMA SICURA
MISURETTA

DANGER
DE BLESSURES
D'ORIGINE
ELECTRIQUE
REMPORTEZ-VOUS
DES EN TOUTES
MISURETTA

PORTER  CABLE



PORTER

WATER DISPENSER













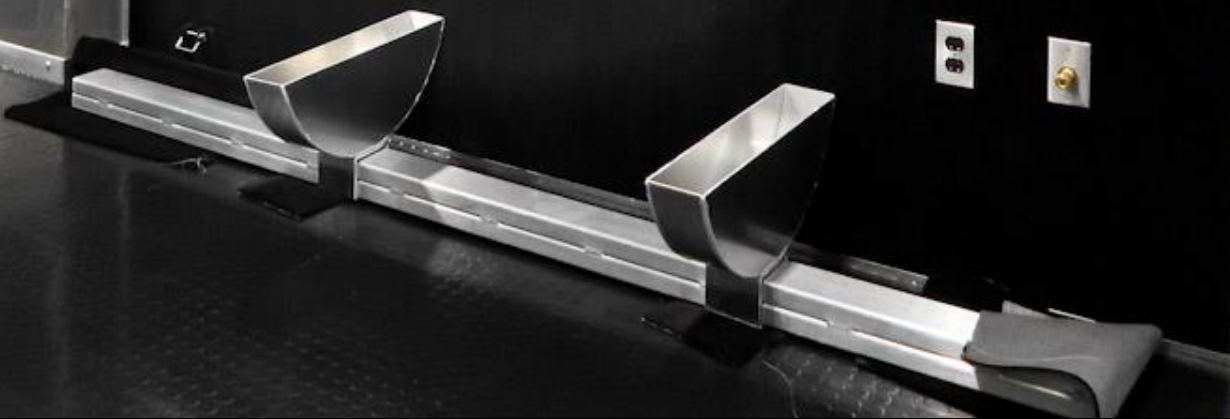






TS































⚠ DANGER

Any restricted vehicle or any restricted area must be secured with perimeter fence and vehicle fire extinguisher or extinguisher stand and vehicle fire extinguisher or extinguisher stand. To ensure the fire extinguisher is in the correct storage area with vehicle fire present.

1. Do not enter the vehicle storage area while vehicle fire is present.
2. Close doors and windows in water or weather if possible when the vehicle is present.
3. Turn fans on in engine or other vehicle operating on top of the tank.
4. Do not start, attempt to, or operate any other vehicle.
5. Operate the window openings or air circulation systems provided for cooling the temperature area when vehicles are present.
6. Do not operate any other equipment, including an electrical appliance when vehicles are present.
7. Do not operate any other equipment, including an electrical appliance when vehicles are present.

REPLACE COVER OF FIRE EXTINGUISHER IMMEDIATELY AFTER USE. PLEASE CONTACT THE MANUFACTURER FOR REPAIRS.

OPERATIONAL INSTRUCTIONS
FOR THE
FIRE EXTINGUISHER

A rectangular instrument panel with a black face. It features three analog gauges: a large one on the left, a smaller one in the middle, and a circular gauge on the right. Below the gauges is a small digital display and several indicator lights.

Two circular digital displays mounted side-by-side. Each has a white face with a black border and a small LCD screen in the center.

A vertical panel of four electrical outlets. The top two are standard two-prong outlets, and the bottom two are three-prong outlets.



















































K30

F	-	-	-	C
2/3	-	-	-	G
1/3	-	-	-	F
E	-	-	-	L

FRESH1 FRESH2 HOLDING GREY BATTERY

TEMP

SYSTEMS Monitor







View of Example
For proper operation, please refer to the
owner's manual for the correct use of the
unit. The unit is designed for use in a
bathroom and should not be used in a
kitchen or other areas where it may be
exposed to water or other liquids.























