



T&E ENT.
AutoHaulers
CUSTOMER PHOTO GALLERY

Buehler T&E Transport Trailer

Final Photos taken Friday 06/28/19







Customs Built
Professional Service and Quality Products
We have always strived for the highest quality
products and service. We are proud to be
a part of the industry and to provide the best
value for our customers.

FX4



Excellence in Quality
Professional Service and Support
Call us today for more information
1-800-368-7329
www.hollandmantrailer.com

OH 230



Equestrian Supply
Professional Service • All American Products
Specializing in horse and equestrian supplies
and accessories for the horse industry since 1978
WWW.EQUESTRIANSUPPLY.COM











WINEGARD

CRAFTSMAN











WARNING
Do not operate this hoist unless you have read and understood the entire instruction manual. Failure to properly operate and maintain the hoisting vehicle and hoist can result in injury.

WARNING
Do not walk on roof. If not avoided, could result in injury.

WARNING
Do not walk on roof. If not avoided, could result in injury.







TE AUTO HAULERS
SNT

88-086





T&E AUTO HAULERS
ENT *Herscher*
9L

DOT-02









PLER 019
3K123825

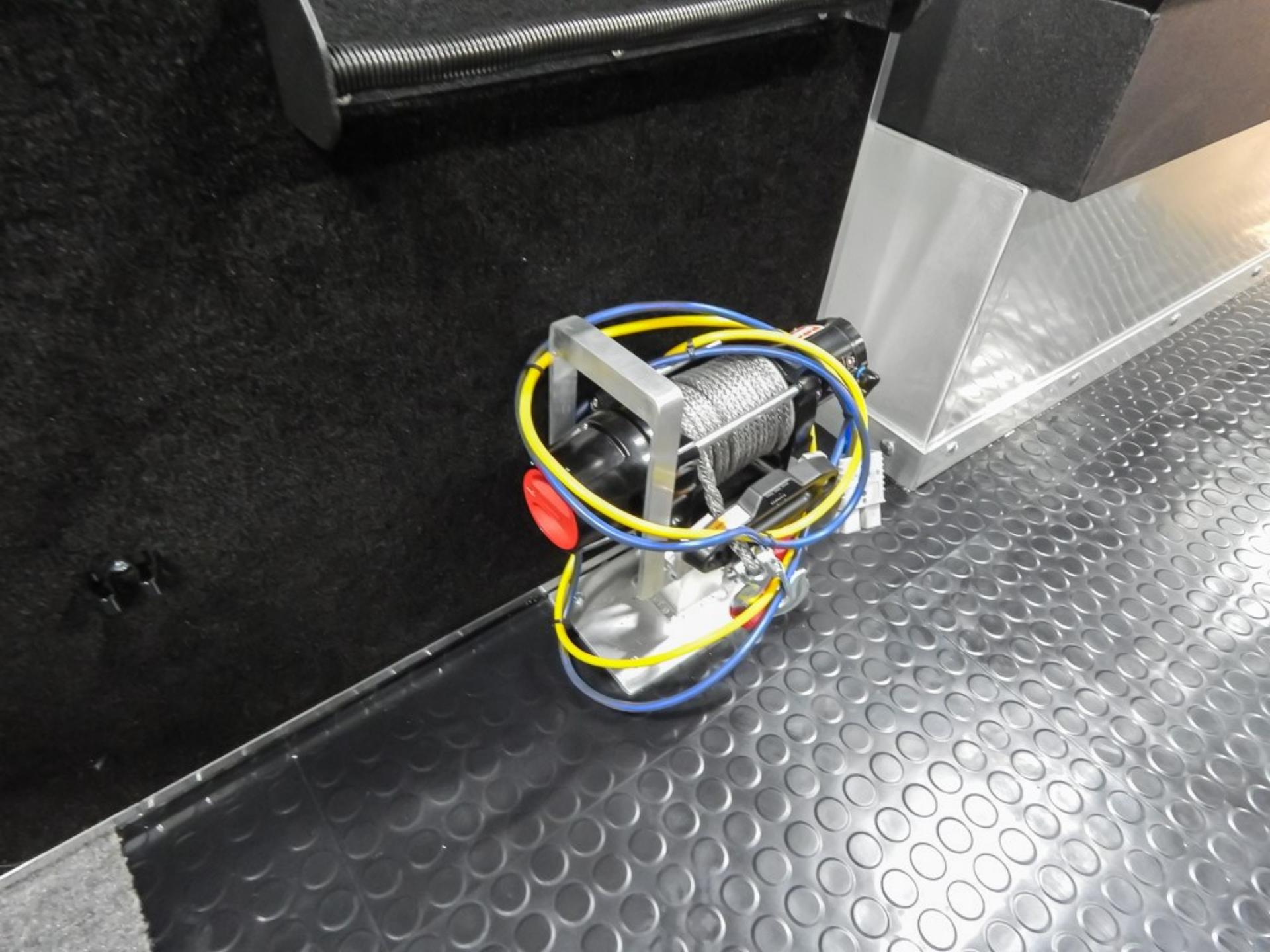


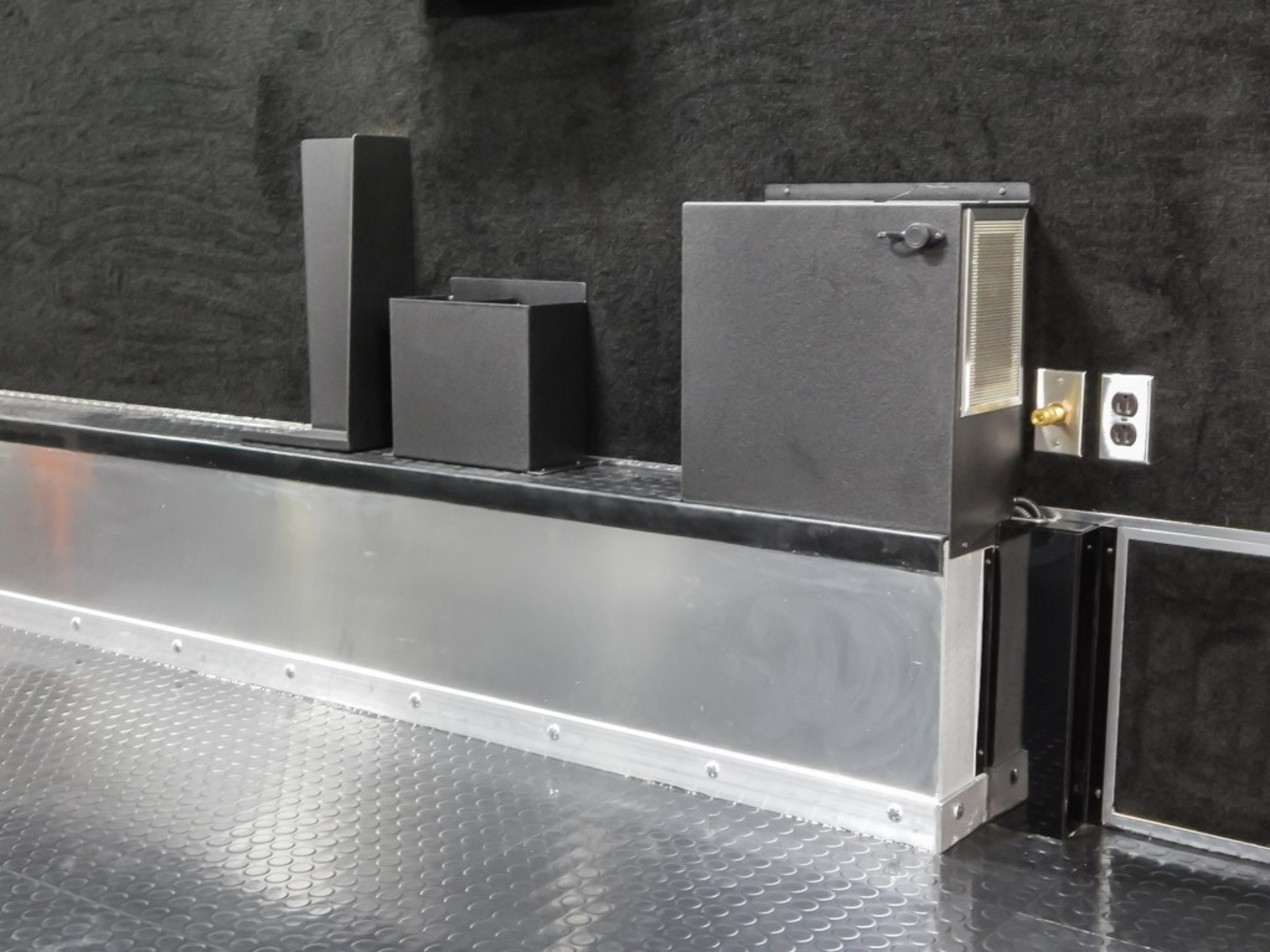
















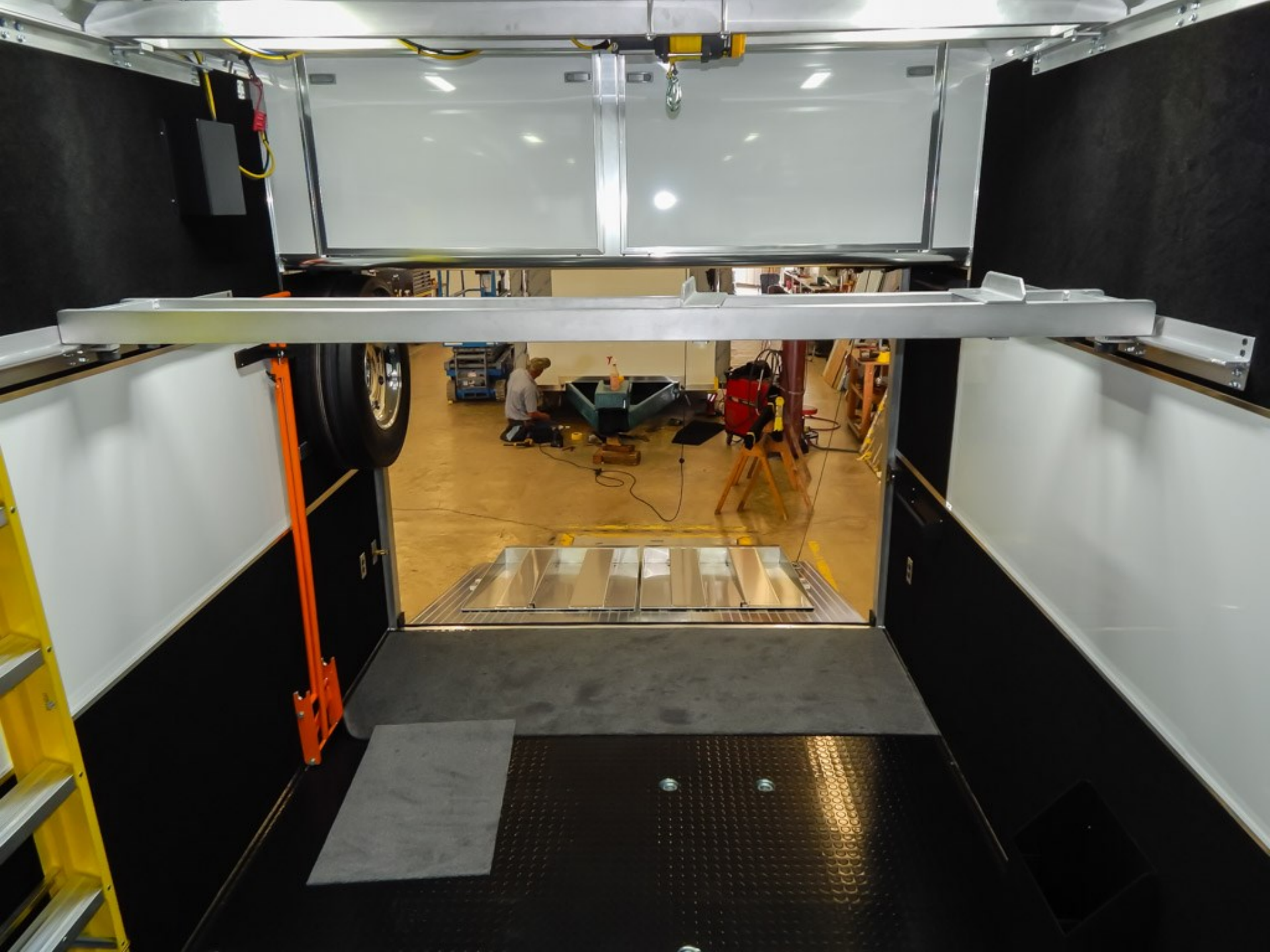






















WINEGARD
Road Trip 121

MAX-AIR



































































CAUTION: This device is not intended for use in areas where explosive atmospheres may be present. The manufacturer is not responsible for any damage or injury caused by the use of this device in such areas. To reduce risk, vehicles are present.

1. Do not ride in the vehicle storage area when vehicles are present.
2. Do not enter in the vehicle storage area or vehicles are present.
3. Close doors and windows in case of separation or risk when any vehicle is present.
4. Pull back all edges of stored vehicles after shutting off fuel of the tank.
5. Do not smoke, transport, or transport fuel inside the vehicle.
6. Check the electrical, hydraulic, or air distribution systems provided for entering the compartment when vehicle is present.
7. Do not operate equipment, start lights, or electrical equipment when equipment is present.









ADVANCED

⚠ DANGER

Vehicles and equipment powered by internal combustion engines and placed in recreational vehicles may cause carbon monoxide poisoning or asphyxiation, which could result in death or serious injury.

The flammable liquids used in power glass hems can cause a fire or explosion, which can result in death or serious injury.

- To reduce risk:
1. Do not ride in the vehicle storage area when vehicles are present.
 2. Do not sleep in the vehicle storage area when vehicles are present.
 3. Close doors and windows to walls of separation (if installed) when any vehicle is present.
 4. Run fuel out of engines of stored vehicles after shutting off fuel at the tank.
 5. Do not store, transport, or dispense fuel inside this vehicle.
 6. Open the exhaust, openings, or air ventilation systems provided for venting the transportation area when vehicles are present.
 7. Do not operate propane appliances, pilot lights, or electrical equipment when motorized vehicles are present.















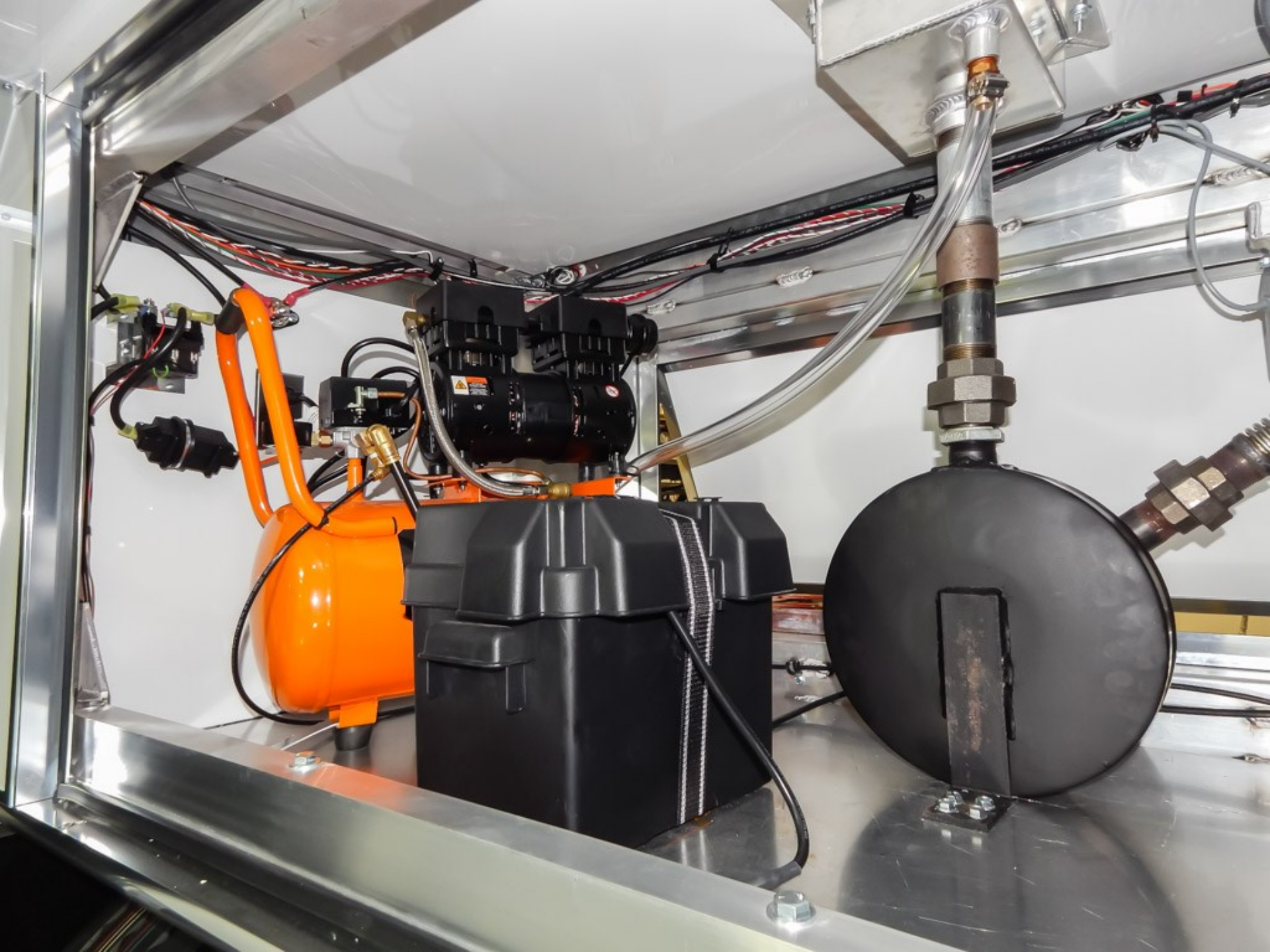














CAUTION

Control Panel
OFF AUTO RUN
A

FUEL FILTER

CAUTION



CAUTION

Do not touch when in running.

Hot. Avoid contact with engine.

Hot area.

POWER TECH
ELECTRONICS

ENTER

OFF

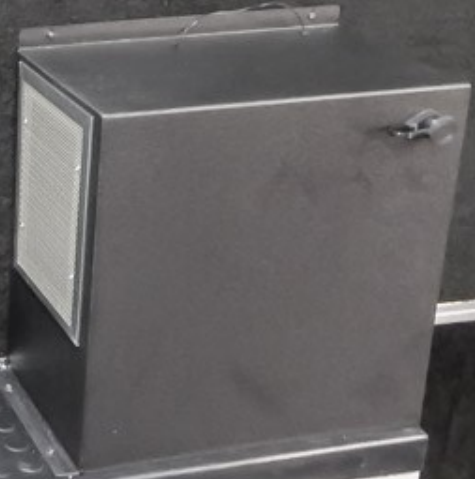
A

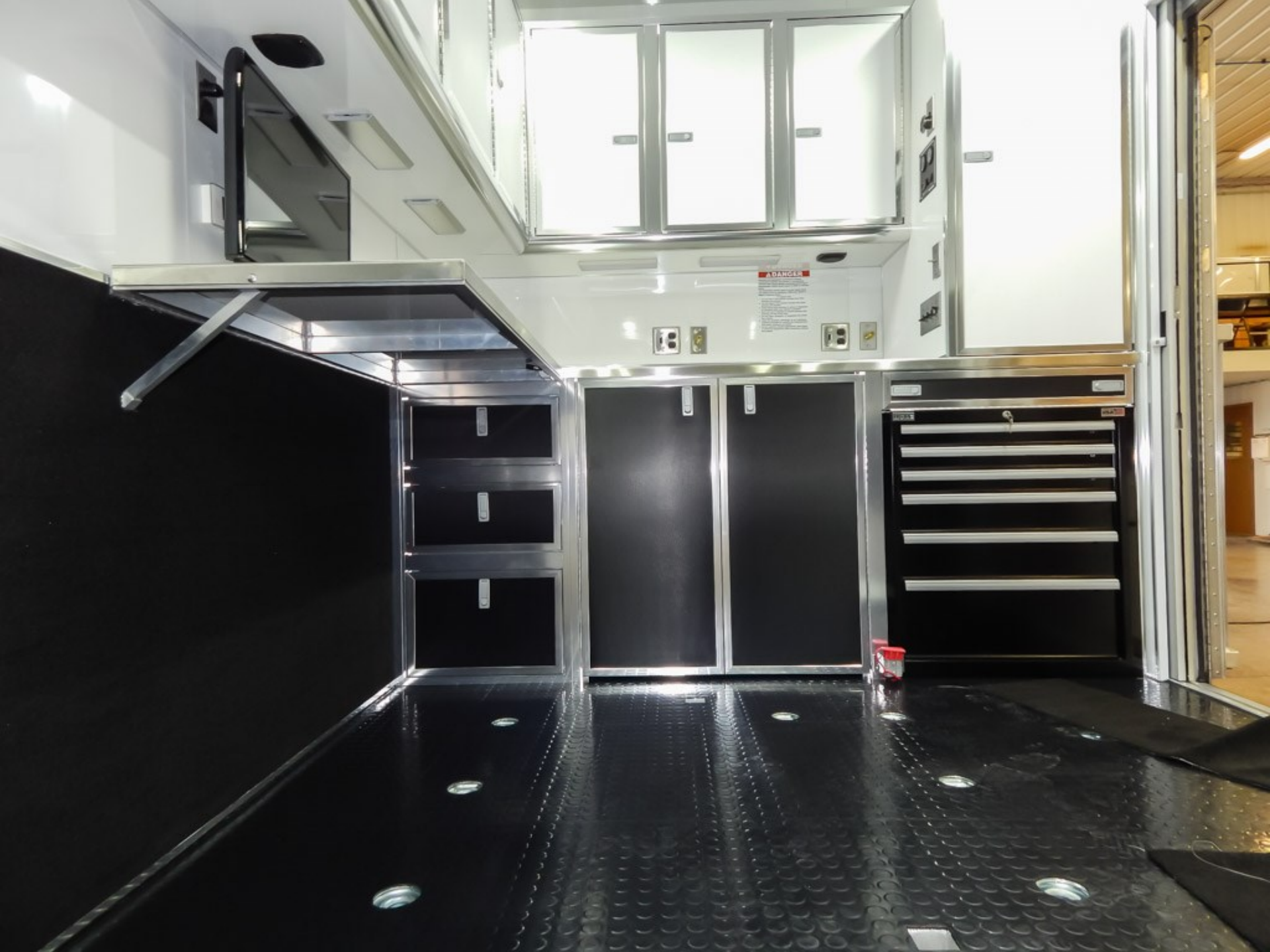
RUN

OFF AUTO RUN

7.5 L

F-100





⚠ DANGER
This area contains electrical equipment. Do not touch or tamper with the equipment. For more information, see the safety manual.





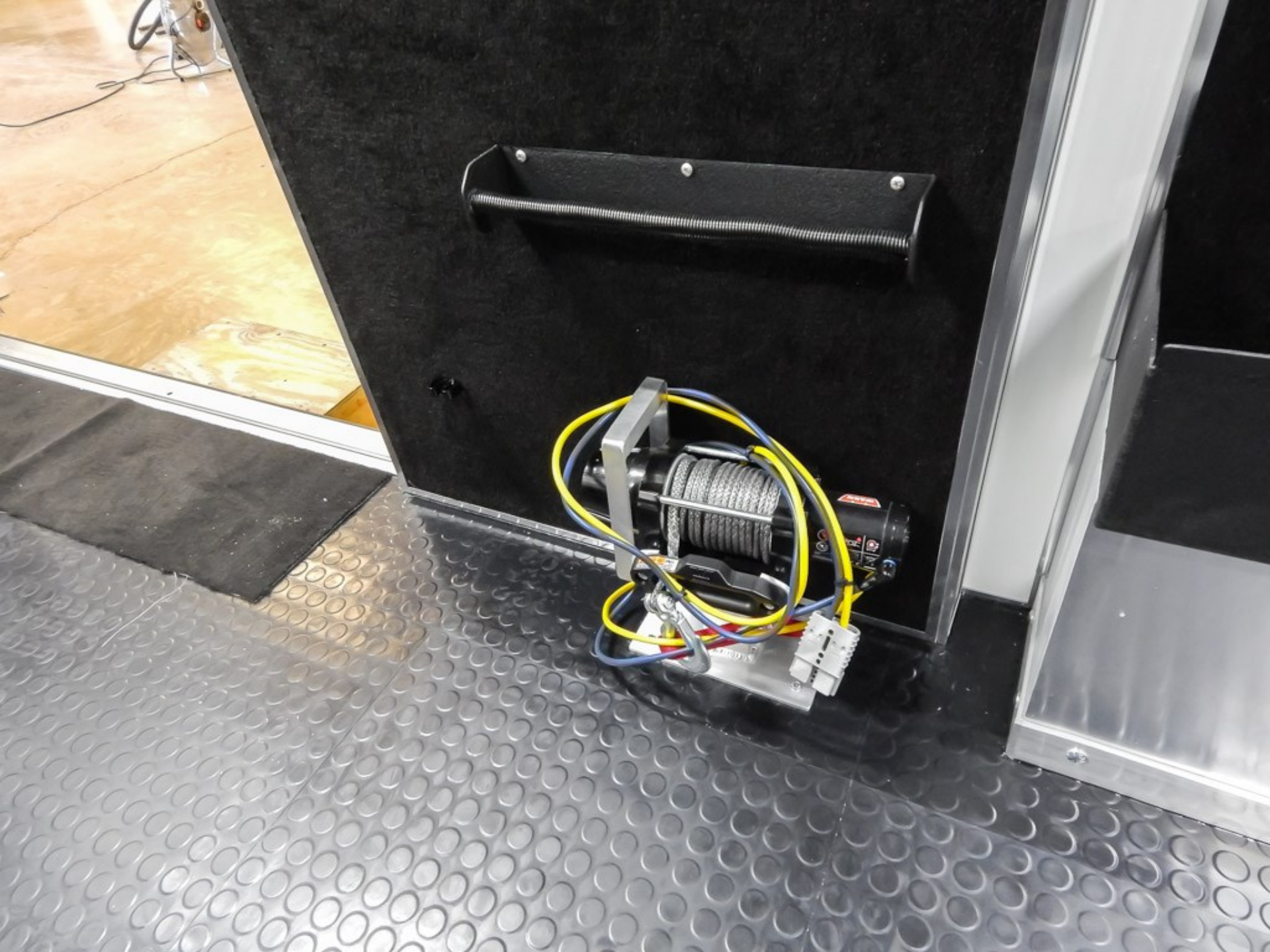


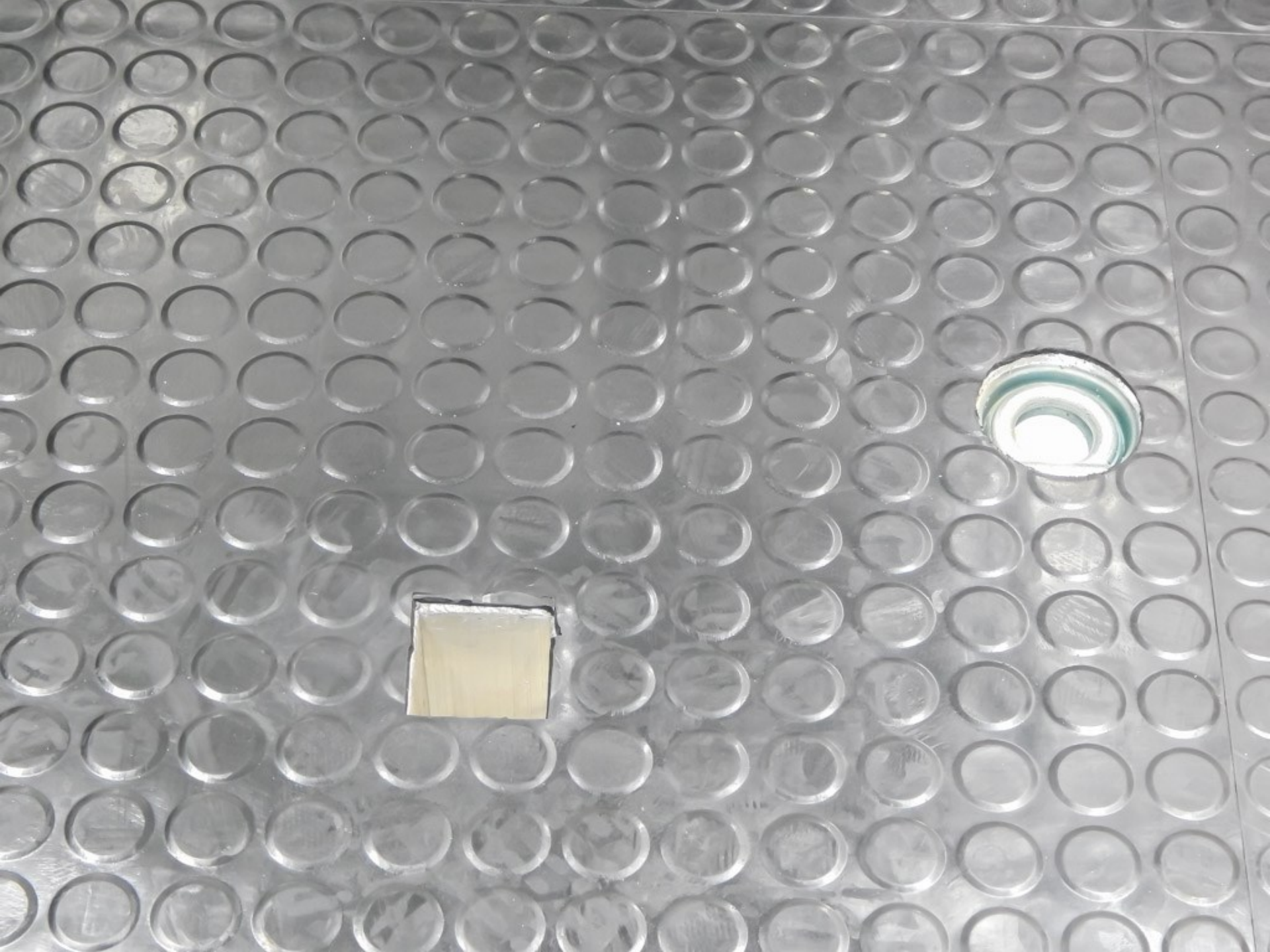










































































WINEGARD



DIRECTV

WINEGARD











WINEGARD











WINEGARD



































































FISHER & PAYKEL























