

# *Custom All Aluminum Gooseneck and 5<sup>th</sup> Wheel Trailers*

## **BUILT FOR SPEED**

*High Quality Trailers Built by Racers for Racers*

**SEMI, GOOSENECK, FIFTH WHEEL AND PULL-A-LONG TRAILERS**

### **AL ROERIG RACING TRAILER**



Call for a Quote - 815.426.2761

[www.tande-racetrailers.com](http://www.tande-racetrailers.com)











Eminent  
Auto Haulers

YE  
Allstate











HERSCHER  
HOME OF THE TIGERS

WENT  
Photo Haulers





HERSCHER  
HOME OF THE TIGERS

BENT  
AutoHaulers

Kenworth





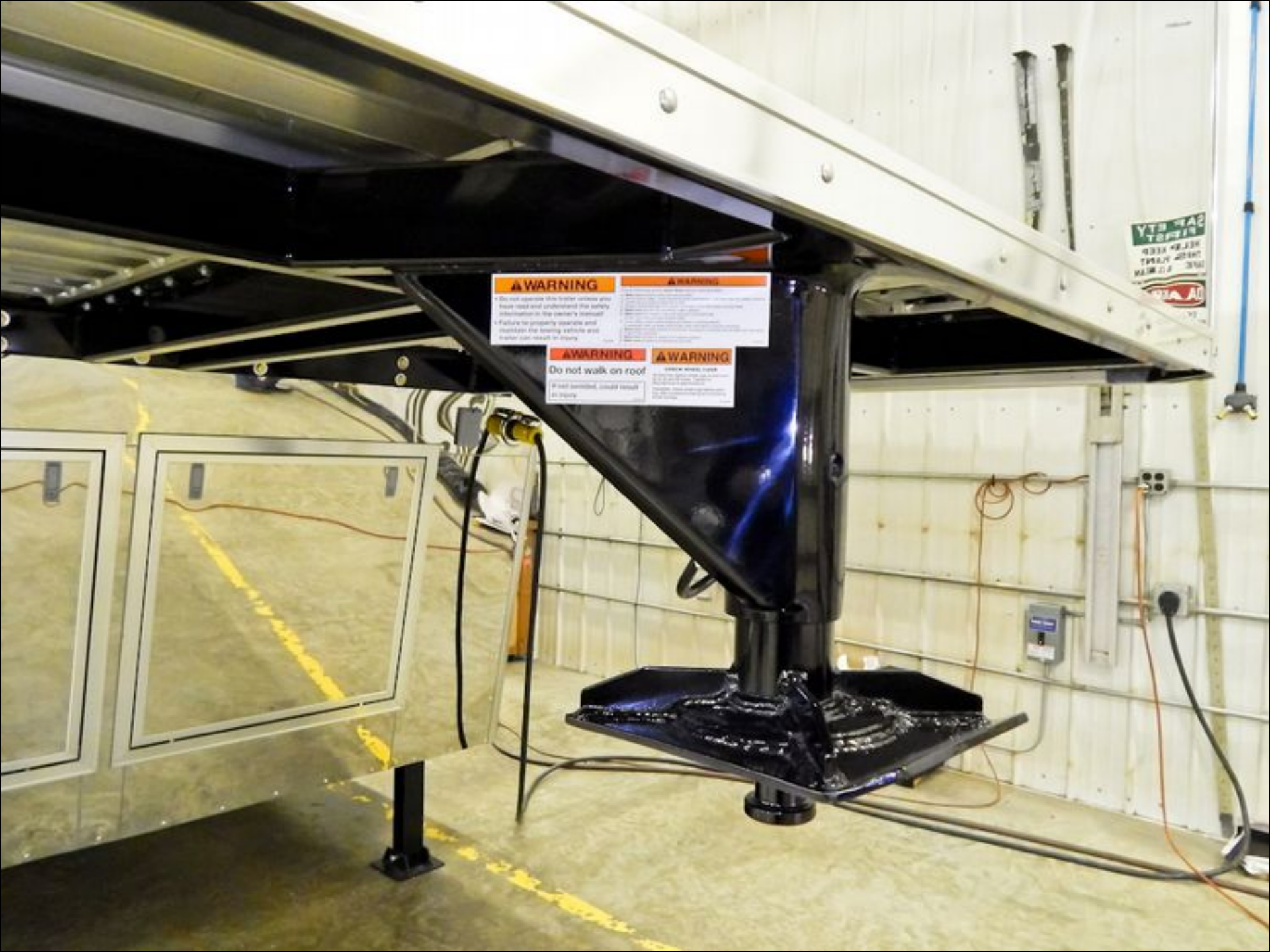












**WARNING**

• Do not operate this trailer unless you have read and understood the safety instructions in the owner's manual.  
• Failure to properly operate and maintain the towing vehicle and trailer can result in injury.

**WARNING**

• Do not use the lift to lift or support any load other than the vehicle being lifted.  
• Do not use the lift to lift or support any load other than the vehicle being lifted.  
• Do not use the lift to lift or support any load other than the vehicle being lifted.

**WARNING**

**Do not walk on roof**  
If not permitted, could result in injury.

**WARNING**

• Do not use the lift to lift or support any load other than the vehicle being lifted.  
• Do not use the lift to lift or support any load other than the vehicle being lifted.  
• Do not use the lift to lift or support any load other than the vehicle being lifted.

VTS 448 TEPER  
KEEP KEYS  
WITH YOU  
THE  
A



**CAUTION** SECURE ALL DOOR AND GATE LATCHES BEFORE MOVING TRAILER.

**CAUTION** DO NOT EXCEED MANUFACTURER'S VEHICLE WEIGHT RANGES OR EXCEEDING RECOMMENDATIONS.

**CAUTION** GET TO KNOW YOUR TRAILER AND ALL THE CHANGES TO YOUR TRAILER'S WEIGHT RANGES OR EXCEEDING RECOMMENDATIONS.

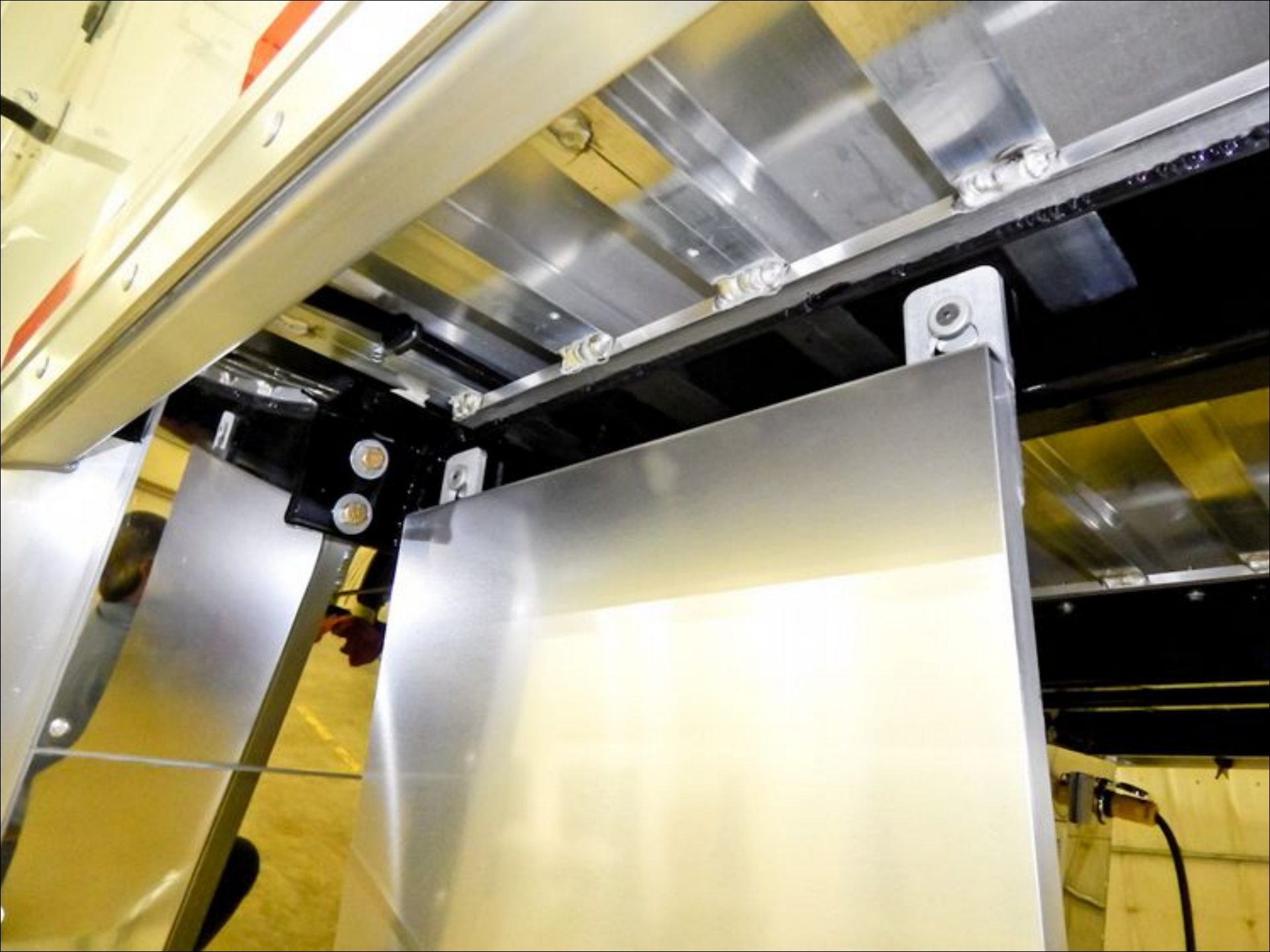
















**POWER TECH**

COMMERCIAL

WARNING  
ELECTRIC SHOCK  
Hazardous Voltage  
Do not touch  
energized parts  
or components  
inside the enclosure  
without proper  
training and  
authorization.  
See the  
Safety Manual  
for more  
information.



**DIESEL  
FUEL ONLY**



**DIESEL  
FUEL ONLY**





FRESH WATER CONNECTION

FRESH WATER CONNECTION







































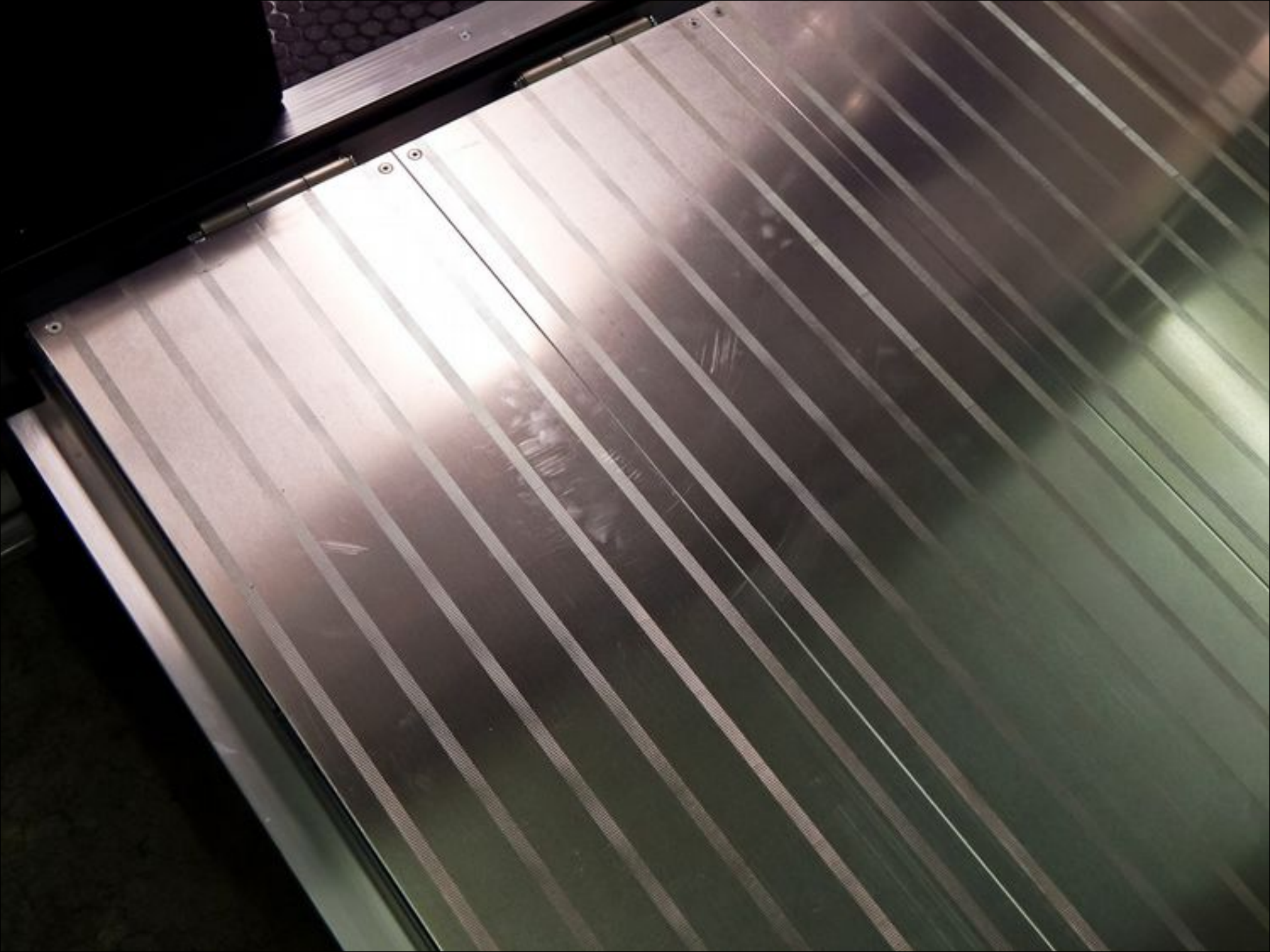


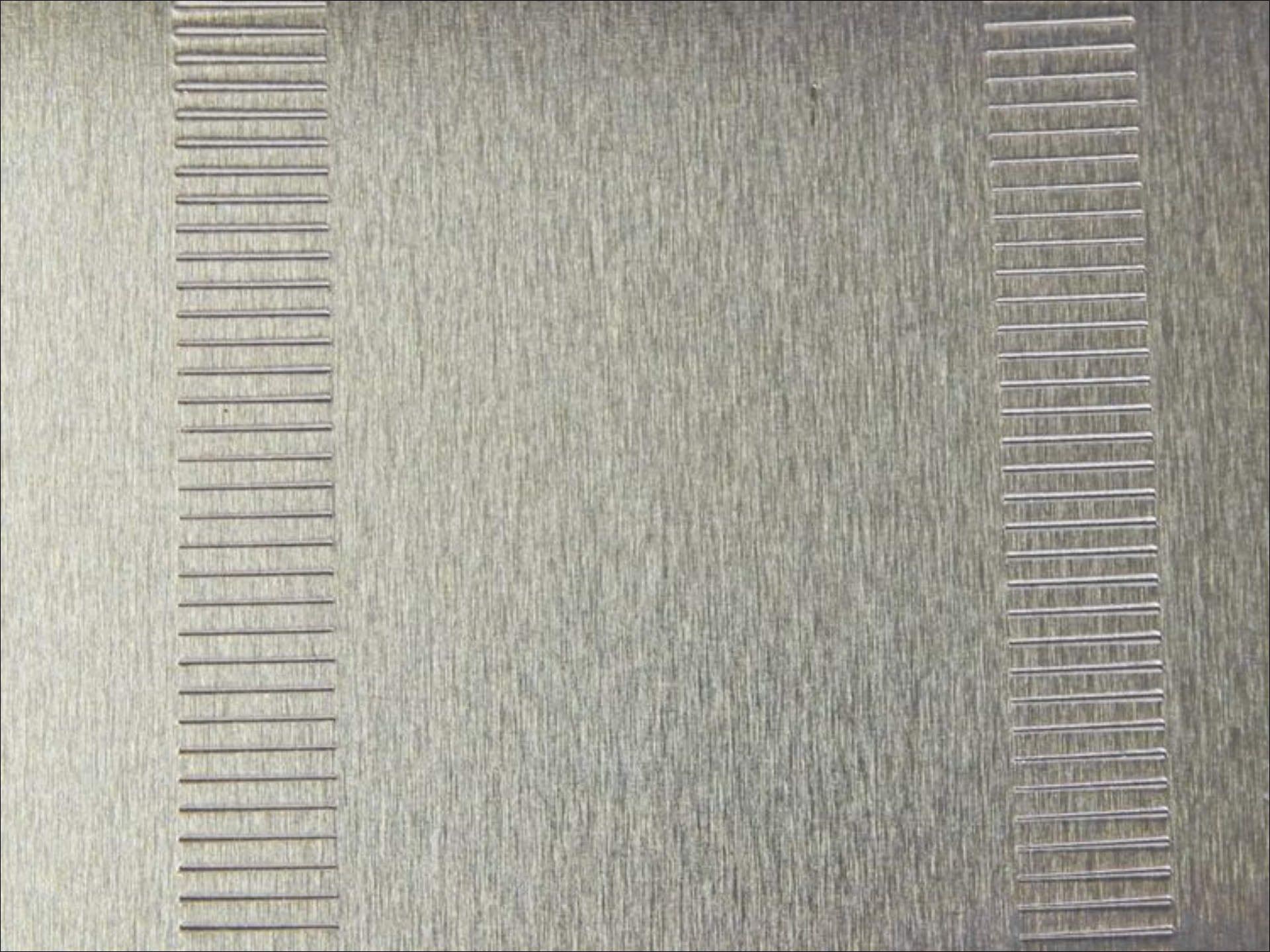






























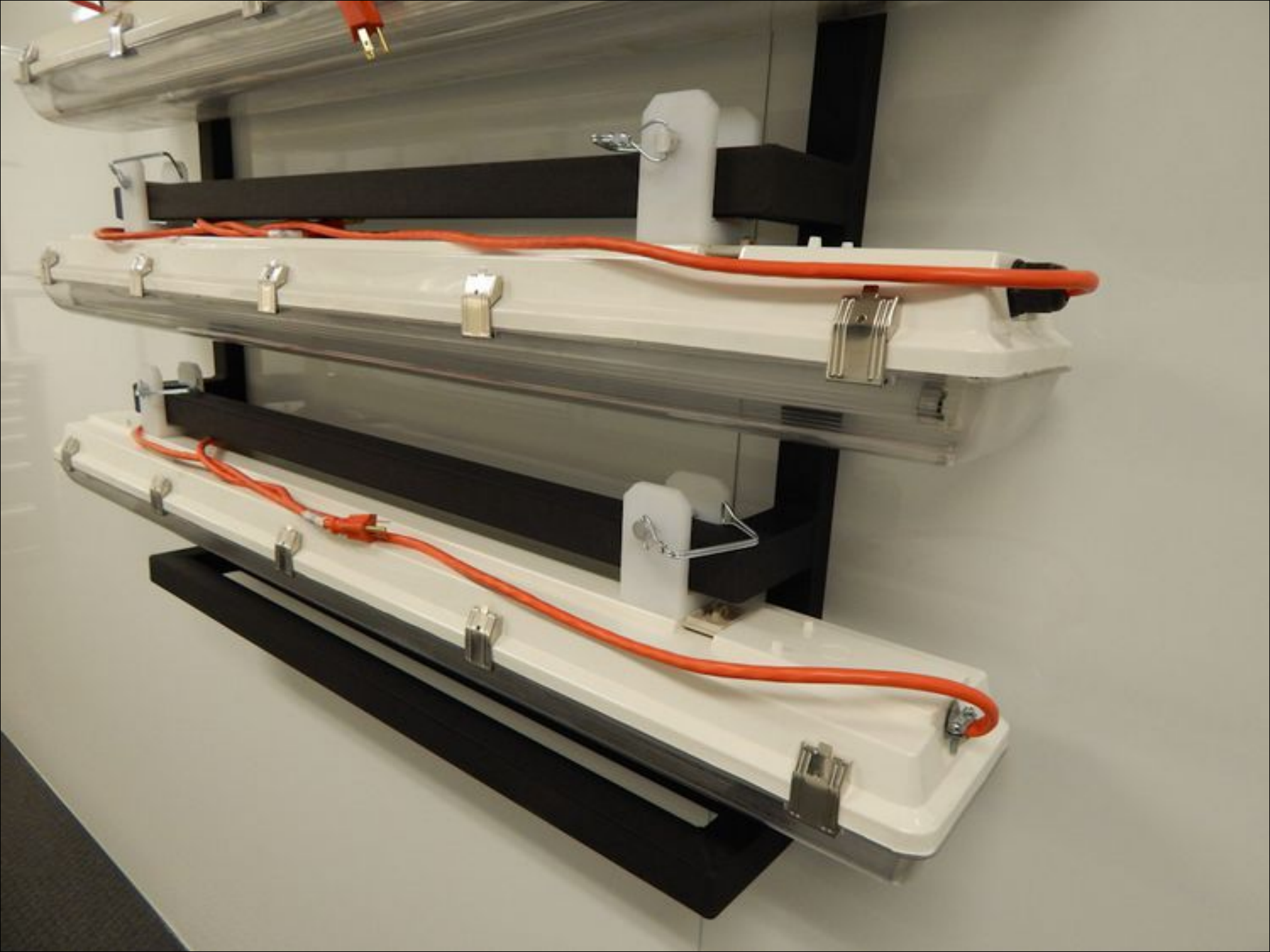






































- explosion, or asphyxiation within the recreational vehicle storage area while of fire, explosion, or asphyxiation.
1. Do not ride in the vehicle storage area while vehicles are present.
  2. Do not sleep in the vehicle storage area while vehicles are present.
  3. Close doors and windows in walls of separation (if installed) while any vehicle is present.
  4. Run fuel out of engines of stored vehicles after shutting off fuel at the tank.
  5. Do not store, transport, or dispense fuel inside this vehicle.
  6. Open the windows, openings, or air ventilation systems provided for venting the transportation area when vehicles are present.
  7. Do not operate propane appliances, pilot lights, or electrical equipment when motorized vehicles are present.

**FAILURE TO COMPLY COULD RESULT IN AN INCREASED RISK OF FIRE, EXPLOSION, ASPHYXIATION, DEATH, OR SERIOUS INJURY.**





before the incineration process. To reduce the risk of fire, explosion, or asphyxiation:

1. Do not store in this cabinet storage bins which contain any product.
2. Do not store in this cabinet storage bins which contain any product.
3. Do not store in this cabinet storage bins which contain any product.
4. Do not store in this cabinet storage bins which contain any product.
5. Do not store in this cabinet storage bins which contain any product.
6. Do not store in this cabinet storage bins which contain any product.
7. Do not store in this cabinet storage bins which contain any product.







**DANGER**  
This equipment is a high voltage X-ray tube. It is not to be opened or tampered with. The X-ray tube is a sealed source of radiation. It is not to be removed from the equipment. The X-ray tube is a sealed source of radiation. It is not to be removed from the equipment. The X-ray tube is a sealed source of radiation. It is not to be removed from the equipment.











**ADANGER**

Any motorized vehicle or any motorized  
appliance with flammable or combustible  
liquids or gases should be used in a well  
ventilated area. Do not use in enclosed  
spaces. Do not use in areas with  
flammable or combustible materials.  
Do not use in areas with  
flammable or combustible materials.



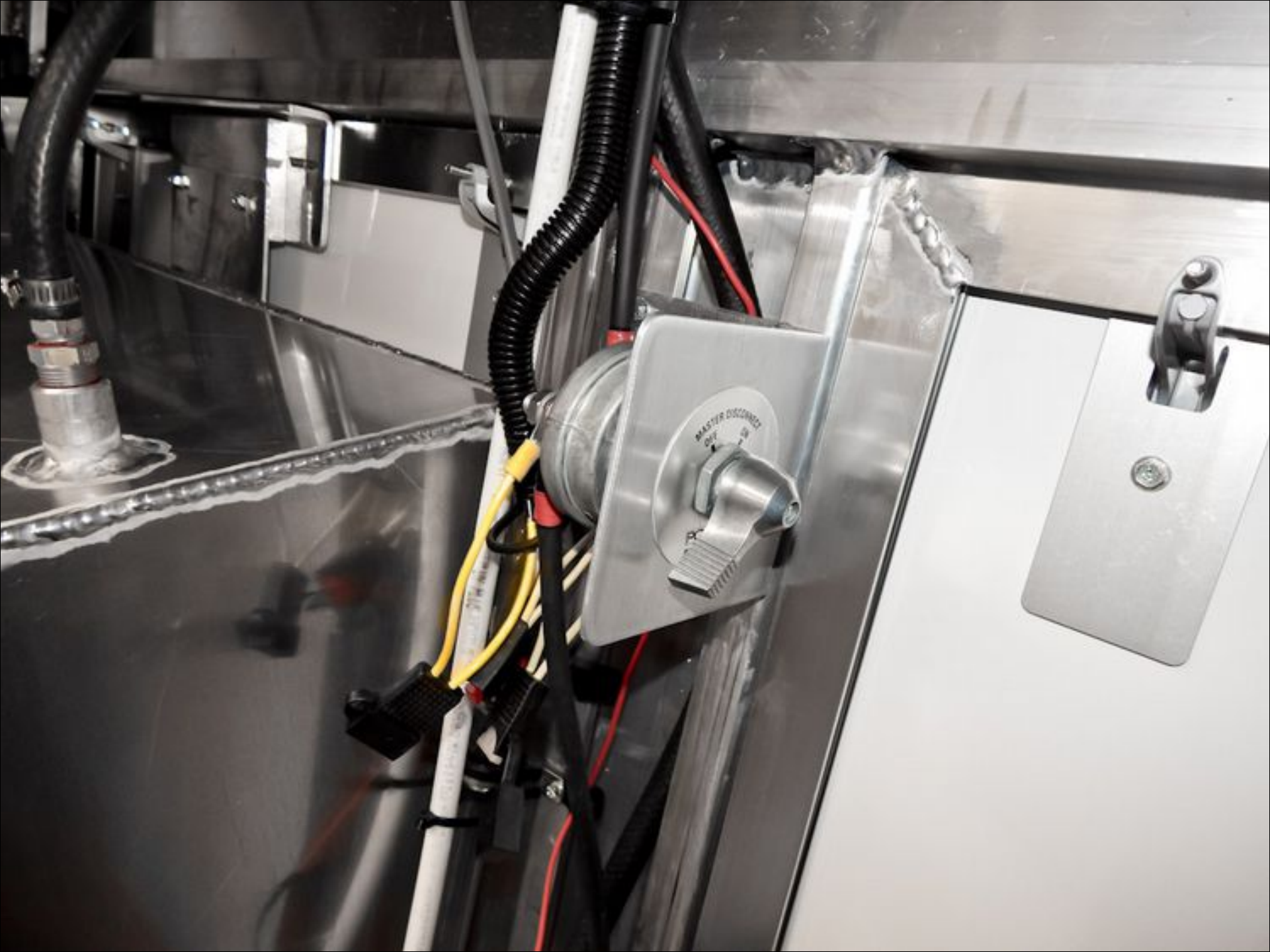




























**⚠ DANGER**  
This equipment contains high voltage components. Only qualified personnel should be allowed to service this equipment. Failure to observe safety precautions could result in serious injury or death. For more information, see the safety manual.























UCL

⓪

⓪

DECK LIGHT



LISTA

LISTA  
STANGE  
2000

LISTA  
STANGE  
2000





ELISTA

ELISTA

ELISTA

WARNING: This cabinet is not to be used for storage of flammable, volatile, or otherwise hazardous materials. Use of such materials may cause fire, explosion, or other damage. For more information, please contact the manufacturer.







































